



# Council Agenda Report

To: Mayor Grisanti and the Honorable Members of the City Council

Prepared by: Rob DuBoux, Public Works Director

Approved by: Steve McClary, Interim City Manager

Date prepared: November 3, 2021 Meeting date: December 13, 2021

Subject: Westward Beach Improvements Project Update (Continued from November 30, 2021)

---

**RECOMMENDED ACTION:** 1) Receive an update on the Westward Beach Improvements Project; and 2) Provide direction to staff.

**FISCAL IMPACT:** Funding for this project was included in the Adopted Budget for Fiscal Year 2021-2022 in Account No. 310-9082. The majority of this project is funded through Measure M, Active Transportation funds. The Measure M funds for this project are set to expire by June 20, 2023.

**WORK PLAN:** This item was included as Items 8.v. in the Adopted Work Plan for Fiscal Year 2021-2022.

**DISCUSSION:** In 2016, the Public Works Commission brought to staff's attention the parking and pedestrian issues on Westward Beach. There is insufficient parking on Westward Beach Road to accommodate the public during peak use times. Vehicles often stop in the travel lanes and wait for an available parking space, which causes the traffic to back up on Westward Beach Road and eventually on Pacific Coast Highway (PCH). The back-up of traffic creates a public safety issue because stopped vehicles can prevent access for emergency vehicles along Westward Beach Road to the beach or Point Dume neighborhood. The Commission was concerned that the existing shoulder area is not sufficient to allow parking on the beach side of the road. Vehicles parked in this area often block a portion of the travel lane while parking. The Commission also noted that pedestrians often walk into the street creating an additional safety concern.

At the Special Budget Workshop on May 2, 2017, the City Council requested that funding be added to the Budget for Fiscal Year 2017-2018 for the design of a capital improvement

project for improvements to parking and the roadway on Westward Beach to increase safety in the area.

The Public Works Department developed potential solutions to the safety problems along Westward Beach Road. A draft plan was presented to the Public Works Commission on February 28, 2018. The proposed improvements include 45-degree angled parking along the beach side, pavement improvements on the land side to improve the parallel parking, a 12-foot wide pedestrian and cycling pathway, and a sand barrier. The proposed 45-degree angled parking would generate approximately 35 additional parking spaces along Westward Beach and will assist in the parking deficiency. The 12-foot pathway is located beyond the 45-degree angled parking spaces on the beach side and would allow the public to walk and cycle in a safe location off Westward Beach Road. Finally, a sand barrier is proposed to prevent sand from blowing on the pathway and parking area to solve a chronic maintenance and safety issue. The Commission provided comments on the design.

On June 26, 2019, staff returned to the Public Works Commission with a revised design for the Westward Beach Improvements project. The Commission discussed the project design including the proposed bicycle route improvements from PCH to the new parking and pathway area. Bicycle route improvement alternatives were proposed, and the Public Works Commission recommended adding a Class II bike lane from PCH to the existing restrooms on Westward Beach Road.

The proposed improvements extend approximately 30 feet from the southerly edge of the existing pavement. The existing roadway edge has deteriorated over time, and vehicles currently park partly on the sand, which creates an additional environmental concern. The upgraded roadway and new parking are designed completely within the City's road right-of-way. The proposed pathway and public access improvements encroach on average 12-15' into the property owned by Los Angeles County Beaches and Harbors (Beaches and Harbors). Staff is working with Beaches and Harbors to develop a memorandum of understanding that includes permission for the City to extend the improvements within Beaches and Harbors' property.

City staff had discussions with California Coastal Commission (CCC) staff regarding the improvements at Westward Beach. CCC staff indicated initial support for the project but stated that Policy 2.20 in the Local Coastal Program (LCP) Land Use Plan (LUP) needed to be amended to allow a portion of the improvements to encroach on the sandy beach. At that time, the LUP language allowed only lifeguard stations, small visitor-serving concessions, trash and recycling receptacles, and physically challenged access improvements to encroach on sandy beach areas, so long as adverse coastal impacts are minimized. On September 23, 2019, the City Council adopted Resolution No. 19-43 initiating the proposed Local Coastal Plan Amendment (LCPA) to make minor changes to LUP Policy 2.20. The Planning Commission held a public hearing on October 21, 2019 to review the proposed LCPA. On November 25, 2019, the City Council adopted Resolution

No. 19-49 amending the LCPA to modify LUP Policy 2.20 pertaining to public improvements to public sandy beach areas in order to facilitate the City's Westward Beach Road Improvements Project.

Based on the discussions with CCC staff and as approved in Resolution No. 19-49, the revised LUP policy reads:

2.20 New public beach facilities shall be limited to only those structures which provide or enhance public recreation activities. No development shall be permitted on sandy public beach areas, except that lifeguard stations, small visitor serving concessions, trash and recycling receptacles, and ~~physically-challenged~~ public access improvements may be permitted when sited and designed to minimize adverse impacts to public access, visual resources and environmentally sensitive habitat areas and marine resources.

The CCC certified the LCPA on March 13, 2020 with no changes made.

Funding for this project was obtained through Measure M Transportation Funds. The project was approved by Metro as Active Transportation focused on improving safety for pedestrians, bicyclists and motorists on Westward Beach Road. Attachment 1 details the scope of work that was reviewed and approved by Metro. On November 23, 2020, the City Council authorized executing the funding agreement with Metro. Per the funding agreement, the Measure M funding will expire on June 30, 2023.

On September 20, 2021, a coastal development permit (CDP) for the Westward Beach project was approved by the Planning Commission. Shortly after the Planning Commission approval, an appeal of the CDP was filed with the CCC. Additionally, staff received concerns from the public regarding the proposed improvements related to sea-level rise and the beach erosion at the nearby Beaches and Harbors parking lot access road. Staff met with two members of the Public Works Commission and the public regarding the project and the current beach issues. The beach is currently a narrow winter beach in which much of the sand sits offshore. The beach will transition seasonally to a summer beach as the waves redeposit the sand on the shore.

Due to the concerns raised about current beach conditions at the site, staff is seeking direction from Council on how to proceed with this project. Any changes to the project scope will require new review by Metro for their approval.

ATTACHMENTS:

1. Westward Beach Road Improvements Metro Approved Scope of Work
2. Westward Beach Road Improvements Exhibit

**Westward Beach Parking and Walkway Improvements**

**Project Overview:**

The project includes roadway modifications to Westward Beach Road to install a pedestrian walkway, bike improvements and provide additional parking along Westward Beach Road. The project will improve pedestrian and bicycle safety, promote active transportation and reduce traffic conflicts by expanding the roadway to include a pedestrian walkway, bicycle facilities and designated parking areas. The project seeks to provide a link from Westward Beach Road to the existing bike facilities on Pacific Coast Highway (PCH). The project will expand the roadway and install a minor retaining wall to act as a sand barrier.

**Project Location:**

On Westward Beach Road adjacent to the popular visitor serving Zuma Beach and Westward Beach areas in Malibu. The project will improve Westward Beach Road between the intersection of Birdview Avenue and running approximately 1,100 feet west approximately .25 miles from Pacific Coast Highway/State Route 1.

**Project Background:**

Westward Beach is a very popular beach destination in Malibu. On busy beach days, vehicles queue on Westward Beach Road waiting for approximately 100 parallel parking spaces. The current roadway is only 24 feet wide and cannot safely accommodate pedestrian and bicycles. To address conflicts between pedestrians, motorists and parked cars in this popular destination area and the surrounding area, the parking area will be expanded to provide angled parking and a 12 foot wide pedestrian walkway near the beach. The newly configured parking and new pedestrian walkway will eliminate the conflict between pedestrians, motorist and parked cars. Beach goers will have a safe access way to Westward Beach. This project will also add new pedestrian/bicycle link from PCH and Zuma Beach to promote a safe access to Westward Beach.

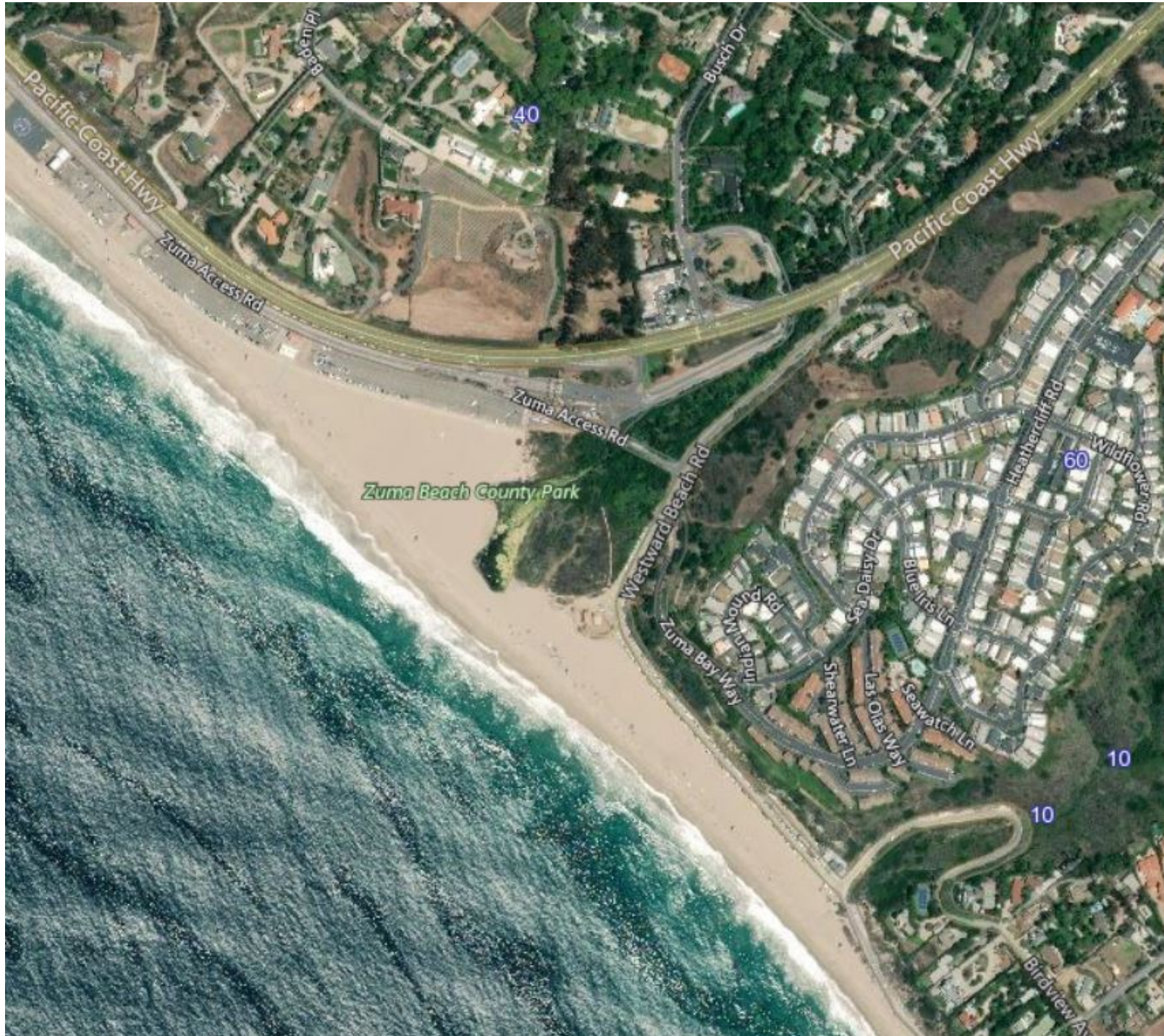
The City of Malibu allocated funding for the project's preliminary design and hired an engineering consultant to begin work in Fiscal Year 2017-2018. A minor retaining wall will be incorporated to the design of this project which will act as a sand barrier. During the preliminary design, it was discovered that the minor retaining wall would require a substantial footing and or foundation piles to protect the retaining wall from being undermined by the changing elevation of the sand adjacent to the walkway. The retaining wall footing and or foundation piles substantially increase the cost of this project.

**Nexus to Active Transportation:**

This project will promote active transportation by improving safety for pedestrians, bicyclists and motorists on Westward Beach Road. The City has recently improved the bike facilities on PCH. This project will provide a safe active transportation link from PCH to Westward Beach.

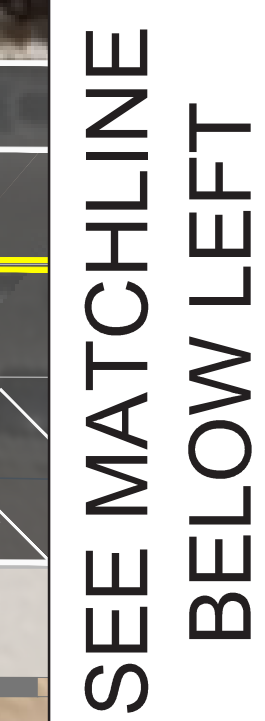


City of Malibu Measure M Funded Projects

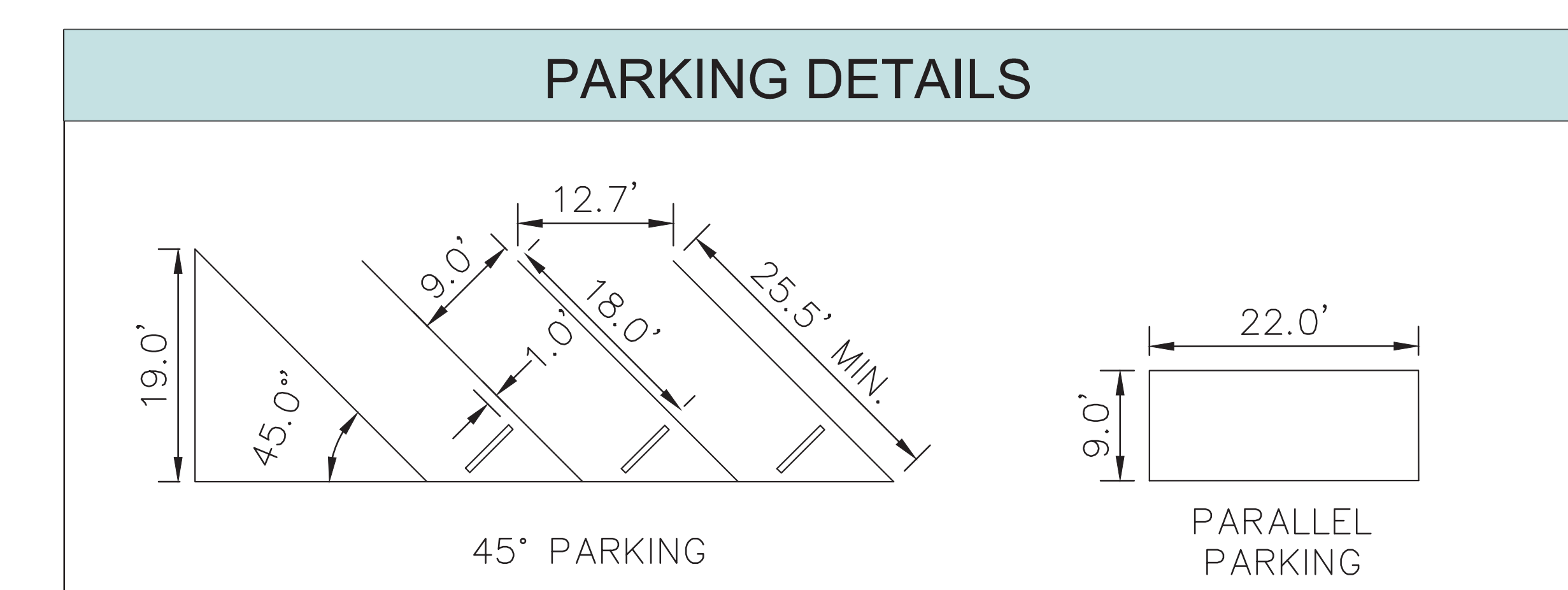




**Kimley»Horn**



WESTWARD BEACH ROAD PROPOSED PARKING		
	Parking Spaces	Accessible Spaces
45 Degree Parking Stall	69	12
90 Degree Parking Stall	-	5
Parallel Parking	60	-
Total Parking Spaces	129	17



## SAMPLE BIKE RACKS

